

## eco line 72/180-185W

### Monocrystalline Module Family

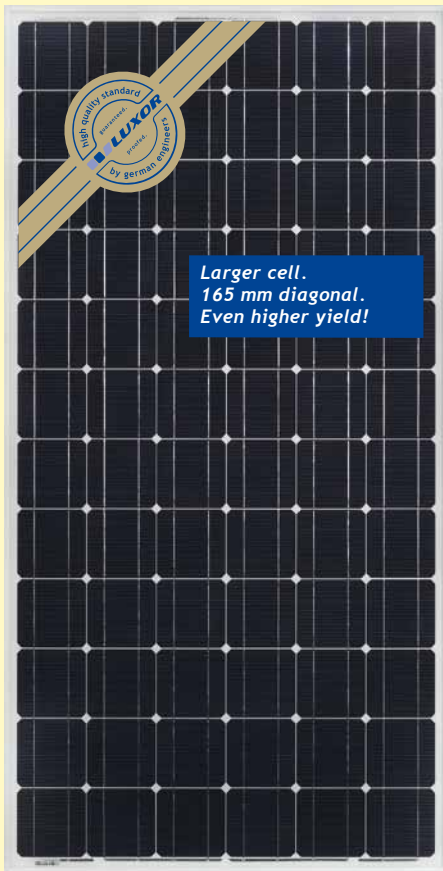


Fig. similar

The flexible and versatile modules have dimensions with a ratio of 1:2. These are ideal to install the modules outdoors or on a trapezoidal panel.

The 72-cell Luxor Solar Module achieves a very high energy yield since high-quality solar cells have an efficiency of 17% and outstanding weak-light performance.

This module has an excellent positive power tolerance peaking up to +6.5 Wp.

The torsionally rigid and corrosion-free cavity frame made of anodized aluminium is compatible with all commercially available assembly systems.

Once again, the solar energy equation is simple:

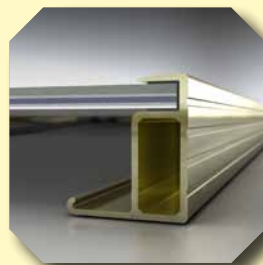
„Light + Value = Luxor“

*Luxor Quality*

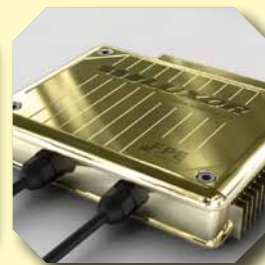
The Luxor brand stands for advanced solar modules with German engineering quality and long-term value retention at an excellent price-performance ratio.

- 10** years with 100 % product guarantee
- 12** years guarantee at 90 % rated performance
- 25** years guarantee at 80 % rated performance

- up to +6.5 Watt positive power tolerance
- IMP sorting
- special packing to avoid Micro Cracks



Sturdy anodized aluminium frame in cavity construction. High supporting and installation properties because of the soft-grip seam.



The Aluminium anodized junction box\* of the German manufacturer FPE Fischer results in optimal cooling of the diodes and offers maximum security against damage through overheating.

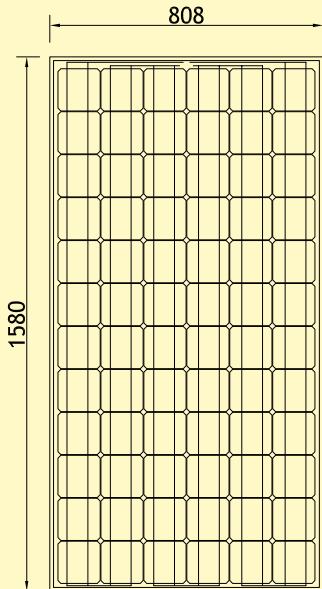
\*available on request



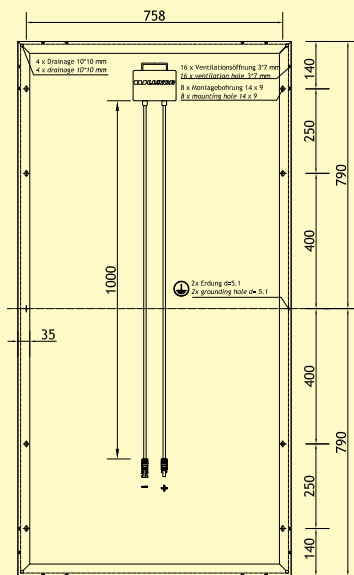
# eco line 72/180-185W

## Monocrystalline Module Family

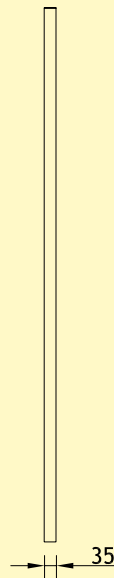
Front view



Back view



Side view



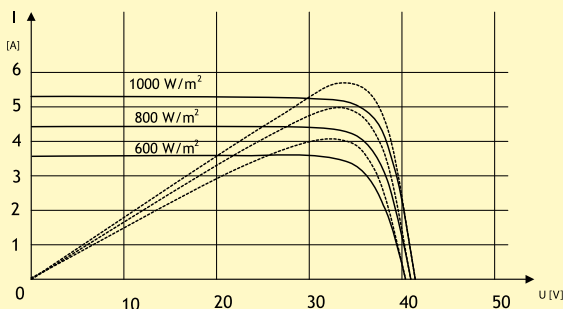
| Electrical data  | LX-180M         | LX-185M         |
|--|-----------------|-----------------|
| Rated power P <sub>mpp</sub> [Wp]  | 180.00          | 185.00          |
| P <sub>mpp</sub> range   | 181.50 - 186.49 | 186.50 - 191.49 |
| Rate current I <sub>mpp</sub> [A]  | 5.03            | 5.14            |
| Rated voltage U <sub>mpp</sub> [V]   | 35.83           | 36.00           |
| Short-circuit current I <sub>sc</sub> [A]  | 5.53            | 5.62            |
| Open-circuit voltage [V]   | 43.35           | 43.58           |
| Efficiency $\eta$  | ∅ 14.01%        | ∅ 14.50%        |
| Maximum system voltage   | 1000V           | 1000V           |
| Specifications as per STC: 1000W/m <sup>2</sup> , 25 °C, AM 1.5 / STC irradiance 1000W/m <sup>2</sup> , Module temperature 25 °C, AM=1.5 · NOCT: 46 °C |                 |                 |

| Temperature coefficients     | LX-180M/185M |
|------------------------------|--------------|
| NOCT [°C]                    | 46 ± 2 °C    |
| Temperature coefficients [U] | -0.35%/°C    |
| Temperature coefficients [I] | 0.05%/°C     |
| Temperature coefficients [P] | -0.49%/°C    |

| Technical data           | LX-180M/185M   |
|--------------------------|--|
| Number of cells (Matrix) | 72x5"  |
| Cell size (mm)           | 165 x 165  |
| Dimensions (LxWxH mm)    | 1580x808x35  |
| Weight (kg)              | 15.0   |
| Glass frontside          | 3.2 mm hard glass  |
| Frame                    | sturdy anodized aluminium frame in cavity construction       |
| Junction box             | 3 Bypass diodes to reduce loss in partial shadow, ventilated |
| Plug connection          | MC4 or equivalent plug system                                |
| Package size             | 26 modules/box<br>IMP classification                         |
| Snow load zone           | release SN2 (DIN 1055)                                       |

The specifications are average values and may slightly vary. The associated individual test data is authoritative. Technical specifications are subject to change without notice. Version: June 2010

### Electrical characteristics



### Certificates



Directives:  
2006/95/EG - 2006/95/EC  
89/336/EWG - 89/336/EEC  
93/68/EWG - 93/68/EEC

Your Luxor expert: