

## eco line 60 / 220-230W

### Polycrystalline Module Family

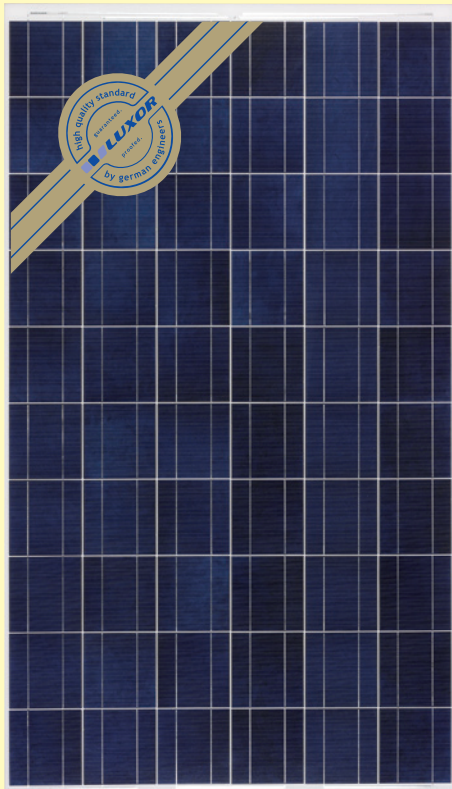


Fig. similar

The large-area all-rounder with high wattage per module is ideal for the economical and efficient assembly of large PV systems – whether they are installed on open ground, on a tracking system or roof-mounted on a roof – the high performance eco module is always your best partner.

The 60-cell Luxor Solar Module achieves a very high energy yield as the high-quality solar cells have an efficiency of 17% and outstanding weak-light performance.

This module has an excellent positive power tolerance peaking up to +6.5 Wp.

The torsionally rigid and corrosion-free cavity frame made of anodized aluminium is compatible with all commercially available assembly systems.

Once again, the solar energy equation is simple:

„Light + Value = Luxor“

#### Luxor Quality

The Luxor brand stands for advanced solar modules with German engineering quality and long-term value retention at an excellent price-performance ratio.

10

years with 100% product guarantee

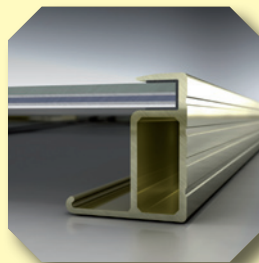
12

years guarantee at 90% rated performance

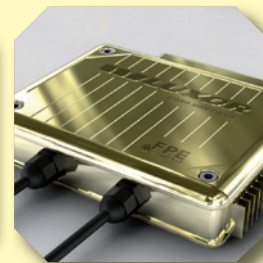
25

years guarantee at 80% rated performance

- up to +6.5 Watt positive power tolerance
- Impv sorting
- special packing to avoid Micro Cracks



Sturdy anodized aluminium frame in cavity construction. High supporting and installation properties because of the soft-grip seam.



The Aluminium anodized junction box\* of the German manufacturer FPE Fischer results in optimal cooling of the diodes and offers maximum security against damage through overheating.

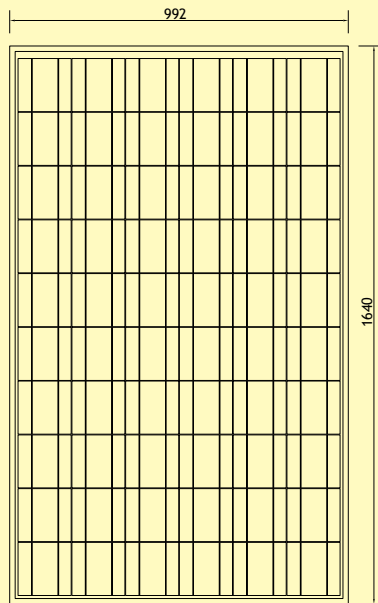
\*available on request



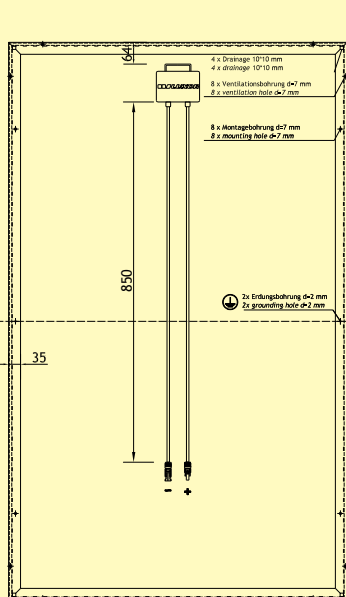
# eco line 60 / 220-230W

## Polycrystalline Module Family

Front view



Back view



Side view



Electrical data	LX-220P	LX-225P	LX-230P
Rated power P <sub>mp</sub> [Wp]	220.00	225.00	230.00
P <sub>mp</sub> range	221.50 - 226.49	226.50 - 231.49	231.50 - 236.49
Rate current I <sub>mp</sub> [A]	7.63	7.73	7.81
Rated voltage U <sub>mp</sub> [V]	29.50	29.76	30.10
Short-circuit current I <sub>sc</sub> [A]	8.20	8.31	8.39
Open-circuit voltage [V]	36.80	37.12	37.55
Efficiency $\eta$	$\varnothing$ 13.71%	$\varnothing$ 14.01%	$\varnothing$ 14.32%
Maximum system voltage	1000V	1000V	1000V

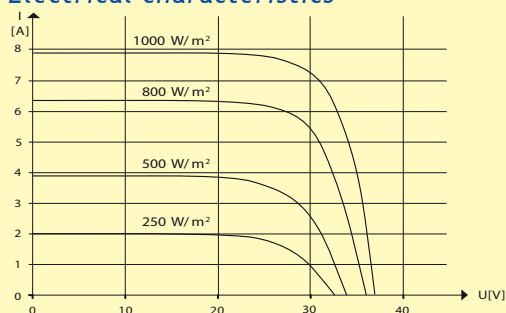
Specifications as per STC: 1000W/m<sup>2</sup>, 25°C, AM 1.5 / STC irradiance 1000W/m<sup>2</sup>, Module temperature 25°C, AM=1.5 · NOCT: 47°C

Temperature coefficients	LX-220P / LX-225P / LX-230P
NOCT [°C]	47 ± 2°C
Temperature coefficients [U]	-0.39% / °C
Temperature coefficients [I]	0.04% / °C
Temperature coefficients [P]	-0.47% / °C

Technical data	LX-220P / LX-225P / LX-230P
Number of cells (Matrix)	60x6"
Cell size (mm)	156x156
Dimensions (LxWxH mm)	1640x992x45
Weight (kg)	21.0
Glass frontside	3.2 mm hard glass
Frame	sturdy anodized aluminium frame in cavity construction
Junction box	3 Bypass diodes to reduce loss in partial shadow, ventilated
Plug connection	MC4 or compatible plug system
Package size	22 modules/box IMP classification
Snow load zone	release SN2 (DIN 1055)

The specifications are average values and may slightly vary. The associated individual test data is authoritative. Technical specifications are subject to change without notice. Version: October 2010

### Electrical characteristics



### Certificates



Directives:  
2006/95/EG - 2006/95/EC  
89/336/EWG - 89/336/EEC  
93/68/EWG - 93/68/EEC

### Your Luxor expert:

